



**WHEELED LOADING SHOVEL | RANGE**



## BUILDING THE **ULTIMATE** RANGE.

**Ever since JCB was founded by Joseph Cyril Bamford in a small garage in Staffordshire in 1945, innovation has driven our machines and our thinking. Of course we've grown since then – to employ over 10,000 people across 4 continents – but innovation remains at the heart of everything we do.**

### **A history of innovation**

We've been innovating since day one, and we've always cultivated a uniquely fearless approach to design. Indeed, we've invented whole new genres of machinery – the backhoe loader and the telehandler for example – and revolutionised others like the tractor or skid steer loader.

### **The best backup in the business**

A key component of any JCB machine is peerless backup and support: our 2,000-strong global dealership and service network keeps the customer at the centre of everything we do, in over 150 countries worldwide. Our World Parts Centre, meanwhile, aims to deliver anywhere on earth within 24 hours.

### **Success by the million**

Every JCB is designed and built to offer ultimate productivity, durability, efficiency, safety, comfort and reliability, so it's perhaps not surprising that we've just built our millionth machine. As you'd expect from such an innovative company though, we won't be resting on our laurels.





# 403 WHEELED LOADING SHOVEL.

## 1. Made to move

The JCB 403 is a compact, manoeuvrable and versatile machine, boasting a 15km/h top speed.

## 2. Powerful engine

Much of this machine's speedy on-site performance is courtesy of a lively 28kW engine.

## 6. Rental and construction

Compact dimensions, manoeuvrability and tremendous strength make this model ideal for the tough worlds of rental and construction.



## 3. Up to any task

This little loading shovel is versatile enough for all sorts of applications, from rental and construction to landscaping and grounds care.

## 4. Loads off your mind

With a 0.3 cubic metre shovel and 2167mm dump height, you can get loads of material shifted in no time.

## 5. Hydrostatic drive

Hydrostatic drive technology makes operation easy; individual hydraulic motors on each wheel allow for good ground clearance and protection.



Add a large selection of attachments – such as shovels, pallet forks or muck fork and grab.



The compact 403 can tackle numerous applications in diverse situations, getting the job done quickly, efficiently and economically.



Fast cycle times.

		403
Operating weight range	kg	2078 - 2115
Maximum gross engine power	kW (hp)	28 (37.5)
Shovel capacity	m <sup>3</sup>	0.3
Full turn tipping load range	kg	678 - 838
Payload range	kg	339 - 419
Maximum breakout force	kN	20.5
Load over height	mm	2634 - 2878

# 406/407/409 WHEELED LOADING SHOVEL.

## 1. Lifting capacity: 406

The smaller 406 has an impressive 3250kg full turn tipping load with its standard 0.8m<sup>3</sup> bucket.

## 2. Lifting capacity: 409

With the standard 1m<sup>3</sup> bucket there's a 4,583kg straight tipping load (3,648kg at full turn). With optional pallet forks there's still a 3737kg capacity.

## 3. Giving great service

Servicing is easy thanks to wide opening bonnets; long service intervals; virtually maintenance-free brakes; and easily accessible components.

## 4. Engine performance

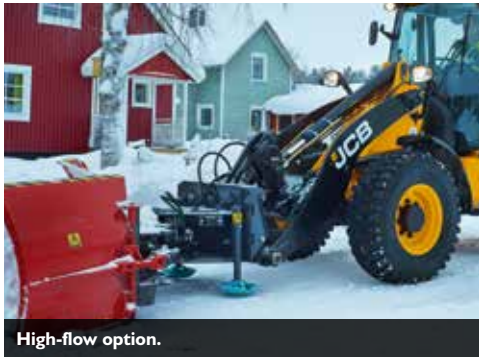
A Tier 4 final / Stage IV-compliant JCB Diesel engine by Kohler without a DPF. Gives maximum uptime and no wasted engine power.

## 5. Innovative transmission

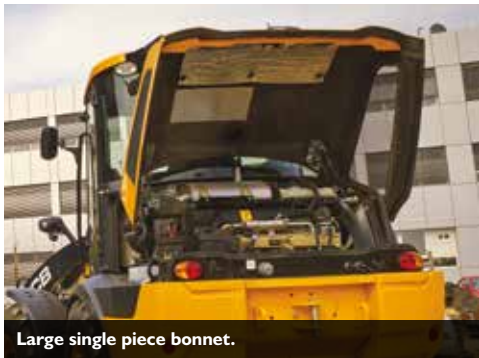
All-wheel-drive hydrostatic transmission provides good traction in all conditions, as well as reduced tyre wear and lower running costs.

## 6. On the road

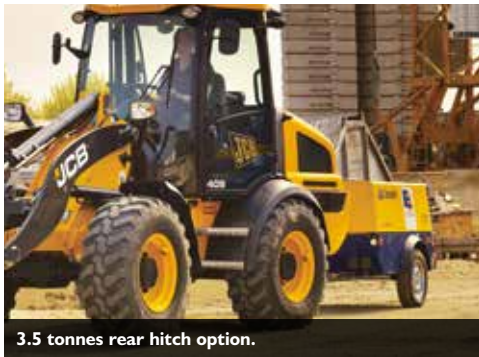
The powerful JCB 409 offers 20km/h roading speed, with an optional 40km/h upgrade for even more speed and productivity.



High-flow option.



Large single piece bonnet.



3.5 tonnes rear hitch option.



Comfortable spacious cab.

		406	407	409
Operating weight range	kg	4873 - 5020	5063 - 5210	5927 - 6031
Maximum gross engine power	kW (hp)	36.4 (49)	48 (64)	56 (75)
Shovel capacity	m <sup>3</sup>	0.8 - 1.4	0.8 - 1.4	1.0 - 1.6
Full turn tipping load range	kg	3088 - 3250	3160 - 3326	3452 - 3648
Payload range	kg	1544 - 1625	1580 - 1663	1726 - 1824
Maximum breakout force	kN	41.9	41.9	53.8
Load over height	mm	2991	2991	3189

# 411/417 WHEELED LOADING SHOVEL.

## 1. Redesigned cab

Our refreshed 3m<sup>3</sup> cab comes with an adjustable steering column, a modern central dash display, colour LCD screen and much more.



## 4. Clearly better

Visibility on these machines is excellent all-round, which helps to boost productivity, operator comfort and safety.

## 5. Always in control

For optimum productivity, there are three control systems including our new joystick and electro-hydraulic proportional auxiliary control.

## 2. EcoMAX productivity

The 4.4-litre EcoMAX engine in the JCB 411/417 delivers plenty of power and torque, and also boasts a variable geometry turbo.

## 3. More for your money

With super-efficient features like high back-off brakes and electronically managed clutch cut-off, you'll enjoy superior efficiency.

## 6. Well-articulated

A heavy-duty box section design with precision-machined pins/bushes and twin taper roller bearings make the articulation joint extremely strong.

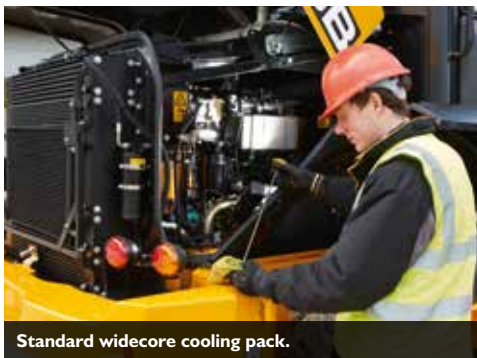




Heavy-duty centre joint.



The 411 and 417 have a range of seat options: mechanical or air suspension, vinyl or fabric bases, or even our Actimo XXL option. It's heated with air suspension, lumbar support, armrests, backrest extension and a headrest, all with full adjustment.



Standard widecore cooling pack.

		411 HT	417 HT	417 HT HL	417 HT SHL
Operating weight range	kg	8621 - 8931	9390 - 9600	9455 - 9700	9995 - 10,540
Maximum gross engine power	kW (hp)	81 (108)	93 (125)	93 (125)	93 (125)
Shovel capacity	m <sup>3</sup>	1.2 - 1.6	1.4 - 1.6	1.4 - 1.6	1.4 - 1.6
Full turn tipping load range	kg	5091 - 5585	5767 - 6129	5337 - 5707	3918 - 4196
Payload range	kg	2545 - 2793	2884 - 3065	2669 - 2854	1960 - 2098
Maximum breakout force	kN	67.7	64.6	64.6	64.6
Load over height	mm	3344 - 3366	3339 - 3358	3554 - 3568	4199 - 4216

# 427/437 WHEELED LOADING SHOVEL.

## 1. Big performers

The Cummins QSB 6.7 litre engine produces massive power (158 or 173hp). Peak torque (801Nm on both models) arrives at low revs.

## 5. No afterthoughts

The engine meets Tier 4i/Stage 3B regulations without after-treatments like SCRs or DPFs. One advantage of this is reduced servicing costs.

## 2. Higher productivity

For high-up applications like hopper and lorry loading, opt for a high-lift (427 and 437) or super-high-lift (437 only) HT arm.



## 3. Loads of benefits

Choose your ideal loader arm: Z-bar linkage (ZX) produces huge breakout, while high torque (HT) excels in parallel lift and multi-attachment use.

## 4. Premium transmission

Optional torque lock-up 5-speed transmission provides 100% efficiency in 2nd to 5th gears, improving fuel consumption.

## 6. Stopping power

JCB's wheel-speed braking technology reduces heat, drag and fuel consumption because the brakes rotate at the same speed as the wheels.



Smoothride option reduces material spillage.



Air conditioning and climate control options.



Large front screen gives excellent visibility.



High torque at low rpm.



Modern spacious 3m³ cab.

		427 HT	427 HT HL	427 ZX	437 HT	437 HT HL	437 HT SHL	437 ZX
Operating weight range	kg	12,734 - 13,362	12,987 - 13,615	13,020 - 13,772	14,778 - 15,050	15,259 - 15,521	15,812 - 16,074	15,255 - 15,610
Maximum gross engine power	kW (hp)	118 (158)	118 (158)	118 (158)	129 (173)	129 (173)	129 (173)	129 (173)
Shovel capacity	m³	1.8 - 2.7	1.8 - 2.7	1.9 - 2.7	2.3 - 2.7	2.3 - 2.7	2.3 - 2.7	2.3 - 2.7
Full turn tipping load range	kg	7085 - 8396	5916 - 7010	7370 - 8370	8870 - 9578	6741 - 7279	5490 - 5929	8643 - 9199
Payload range	kg	3542 - 4198	2900 - 3500	3700 - 4200	4400 - 4800	3300 - 3600	2700 - 2900	4300 - 4600
Maximum breakout force	kN	123	123	129	134	134	139	162
Load over height	mm	3610 - 3627	4040 - 4057	3638 - 3645	3755	4409	4976	3755

# 457 WHEELED LOADING SHOVEL.

## 1. Built to last

We use state-of-the-art manufacturing processes like robot machining, precision paint technology and innovative assembly techniques.

## 2. JCB CommandPlus Cab

The ultimate in operator comfort and productivity. Unrivalled visibility, command driving position and seat mounted controls keep you in total command.

## 5. New generation not regeneration

The engine meets Tier 4/Stage IV regulations without the requirement for a costly and complex DPF. One advantage of this is reduced servicing costs.

## 3. Low maintenance braking

Because the braking system uses a hydraulic dual circuit design with oil-immersed discs, it has a virtually maintenance-free lifespan.

## 4. Optimum performance

Our optional close-ratio 5-speed gearbox improves acceleration, hill climbing and roading. The lock-up element improves cycle times and efficiency even more.

## 6. The ultimate engine

A MTU 7.7 litre engine 193kW(258hp) is fitted to the 457; expect 4% more power and up to 16% efficiency gains than outgoing model 186kW(250hp)



Excellent all-round visibility.



Automatic opening single piece bonnet.



Increased power at low revs gives up to 16% fuel savings.



JCB CommandPlus cab with two LCD screens give easy access to operating menus. Adjustable steering column with seat mounted hydraulic controls.



		457 HT	457 HT SHL	457 ZX	457 ZX HL
Operating weight range	kg	20,152 - 20,802	20,989 - 21,712	19,621 - 20,177	19,883 - 20,512
Maximum gross engine power	kW (hp)	193 (258)	193 (258)	193 (258)	193 (258)
Shovel capacity	m <sup>3</sup>	3.1 - 3.5	2.8 - 3.5	3.1 - 3.5	2.8 - 3.5
Full turn tipping load range	kg	12,467 - 13,438	7982 - 9009	13,100 - 13,933	9680 - 10,505
Payload range	kg	6233 - 6719	3991 - 4505	6550 - 6997	4840 - 5252
Maximum breakout force	kN	143	145	154	136
Load over height	mm	4031	4997	3834	4405

## ATTACHMENTS.

FROM BUCKETS, SHOVELS, HYDRAULIC POWERPACKS AND TOOLS, TO SPECIALISED PRODUCTS FOR A HUGE RANGE OF APPLICATIONS LIKE SORTING AND DEMOLITION, OUR GENUINE JCB ATTACHMENTS CAN BE PERFECTLY MATCHED TO ANY MACHINE. THEY'RE BACKED BY OUR WORLDWIDE SERVICE TEAM TOO.



High capacity waste shovel.



Sweeper collector.



Forks.



High tip shovel.



Waste shovel with top grab.

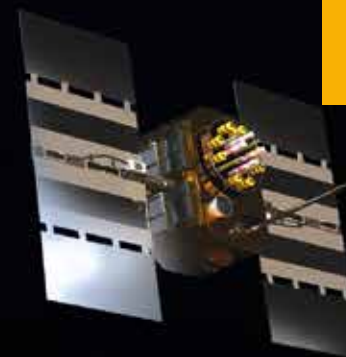
<b>403</b>		<b>GP Shovels</b>	<b>6 in 1 Shovel</b>	<b>Forks</b>	<b>Fork Frame</b>	<b>Crane Hook</b>	<b>Sweeper Collector</b>	<b>Rehandling Shovel</b>
Size	mm	1050	-	-	1000	-	-	-
Capacity		0.3	-	-	0.13	-	-	-
Weight	kg	102	-	-	132	-	-	-
<b>406/407</b>								
Size	mm	1750-1900	1900	1070-1200	1345	340	2100	-
Capacity		0.8-1.4m <sup>3</sup>	0.75m <sup>3</sup>	1t-1.5t	-	1t	0.37m <sup>3</sup>	-
Weight	kg	275-400	408	94-100	75	106	705	-
<b>409</b>								
Size	mm	1950-2200	1950	1070	1345	340	2100	-
Capacity		0.9-1.6m <sup>3</sup>	0.9m <sup>3</sup>	1t-1.5t	-	1t	0.37m <sup>3</sup>	-
Weight	kg	332-485	404	94-117	96-130	106	705	-
<b>411</b>								
Size	mm	2250-2400	-	1200-1500	1500-2000	-	2400	2286
Capacity		1-1.4 m <sup>3</sup>	-	2.5t	-	-	0.3	1.2m <sup>3</sup>
Weight	kg	395-496	-	96-164	270-361	-	806	416
<b>417</b>								
Size	mm							2286
Capacity		1.2-1.6	1.1	2.5t	-	-	0.3	1.2 m <sup>3</sup>
Weight	kg	425-527	680	96-164	270-361	-	806	416
<b>427</b>								
Size	mm	2548-2700	-	1220-1500	1500-2000	-	-	-
Capacity		1.8-2	-	-	-	-	-	-
Weight	kg	669-874	-	96-164	270-361	-	-	-
<b>437</b>								
Size	mm	2590-2700	-	1220-1500	1500-2000	-	-	-
Capacity		2.3-2.6	-	2.5t	-	-	-	-
Weight	kg	950-1361	-	96-164	270-361	-	-	-
<b>457</b>								
Size	mm	2800	-	1200	1500	-	-	-
Capacity		2.8-3.3	-	4.2t	-	-	-	-
Weight	kg	1321-1500	-	124	400	-	-	-

## LIVELINK, WORK SMARTER.

**LIVELINK IS AN INNOVATIVE SOFTWARE SYSTEM THAT LETS YOU MANAGE JCB MACHINES REMOTELY – ONLINE, BY EMAIL OR BY MOBILE PHONE. ACCESS EVERYTHING FROM MACHINE ALERTS TO FUEL REPORTS AND HISTORY INFORMATION, WITH ALL DATA STORED AT A SECURE CENTRE.**

### Productivity and cost benefits

By providing information like idle time monitoring and machine fuel consumption, JCB Livelink helps reduce your fuel usage, saving money and improving productivity. Machine location information can help improve efficiency and perhaps even reduce insurance costs.



### Maintenance benefits

Manage machine maintenance easily – accurate hours monitoring and service alerts improve maintenance planning, while real-time location data helps you manage your fleet. Critical machine alerts and maintenance history records are also available.



### Security benefits

Livelink's real-time geofencing alerts tell you when machines move out of predetermined zones, and real-time curfew alerts inform you of unauthorised usage. Further benefits include real-time location information.





## VALUE ADDED.

JCB'S WORLDWIDE CUSTOMER SUPPORT IS FIRST CLASS. WHATEVER YOU NEED AND WHEREVER YOU ARE, WE'LL BE AVAILABLE QUICKLY AND EFFICIENTLY TO HELP MAKE SURE YOUR MACHINERY IS PERFORMING TO ITS FULL POTENTIAL.



1

1 Our Technical Support Service provides instant access to factory expertise, day or night, while our Finance and Insurance teams are always on hand to provide fast, flexible, competitive quotes.

2 The global network of JCB Parts Centres is another model of efficiency; with 16 regional bases, we can deliver around 95% of all parts anywhere in the world within 24 hours. Our genuine JCB parts are designed to work in perfect harmony with your machine for optimum performance and productivity.



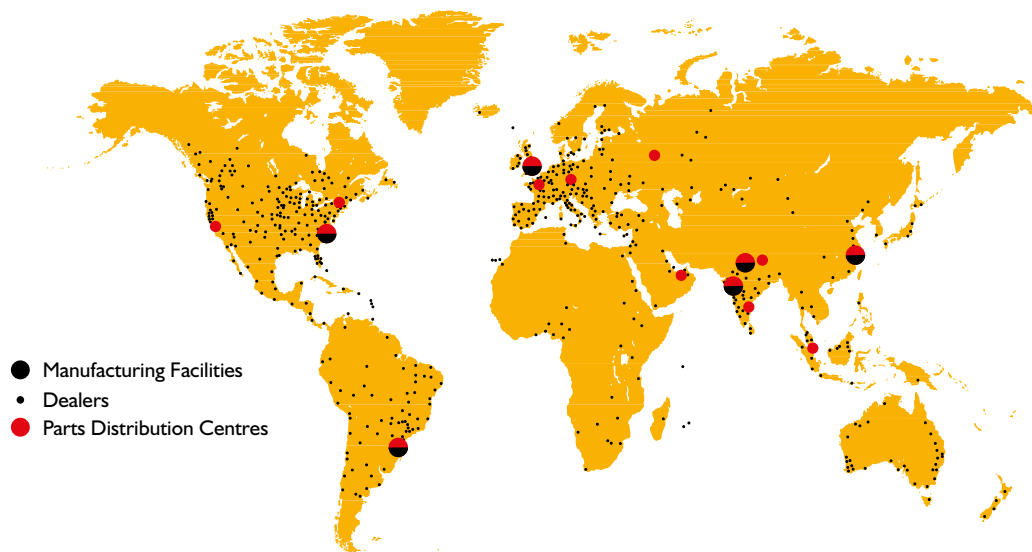
2

3 JCB Assetcare offers comprehensive extended warranties and service agreements, as well as service-only or repair and maintenance contracts. Irrespective of what you opt for, our maintenance teams around the world charge competitive labour rates, and offer non-obligation quotations as well as fast, efficient insurance repair work.



3

Note: JCB LIVELINK and JCB ASSETCARE may not be available in your region, so please check with your local dealer.









**ONE COMPANY, OVER 300 MACHINES.**

Your nearest JCB dealer

**WHEELED LOADING SHOVEL RANGE**

JCB Sales Limited, Rocester, Staffordshire, United Kingdom ST14 5JP.  
 Tel: +44 (0)1889 590312 Email: salesinfo@jcb.com  
 Download the very latest information on this product range at: [www.jcb.com](http://www.jcb.com)

©2009 JCB Sales. All rights reserved. No part of this publication may be reproduced, stored in a retrieval system, or transmitted in any form or by any other means, electronic, mechanical, photocopying or otherwise, without prior permission from JCB Sales. All references in this publication to operating weights, sizes, capacities and other performance measurements are provided for guidance only and may vary dependant upon the exact specification of machine. They should not therefore be relied upon in relation to suitability for a particular application. Guidance and advice should always be sought from your JCB Dealer. JCB reserves the right to change specifications without notice. Illustrations and specifications shown may include optional equipment and accessories. The JCB logo is a registered trademark of J C Bamford Excavators Ltd.

