

SPECIFICATION

SITE MASTER

THE ONE MACHINE FLEET



EXCAVATOR LOADER | ICX / ICXT / 2DX

Gross power: 36kW (49hp) Maximum dig depth: 3.08m Shovel capacity: 0.32 - 0.57m³



SITEMASTER THE ONE MACHINE FLEET.

The ICX is the smallest model in the JCB backhoe loader range, bringing performance and capability to previously inaccessible areas. Additionally, the JCB 2DX is a compact machine that combines a low centre of gravity with good ground clearance for versatile performance.



SITEMASTER OF VERSATILITY.

The ICX and 2DX compact excavator loaders are two of the most versatile machines in the world. By combining an excavator and loader, you get two machines in one.



SITEMASTER OF PERFORMANCE.

Our multi-purpose rear excavator minimises repositioning; it also enables easy digging parallel to walls or in an off-centre position for better visibility when working.



SITEMASTER OF POWER & EFFICIENCY.

We've installed a powerful engine in these compact, agile machines, which together with their loading and digging capabilities enable them to tackle the toughest jobs.



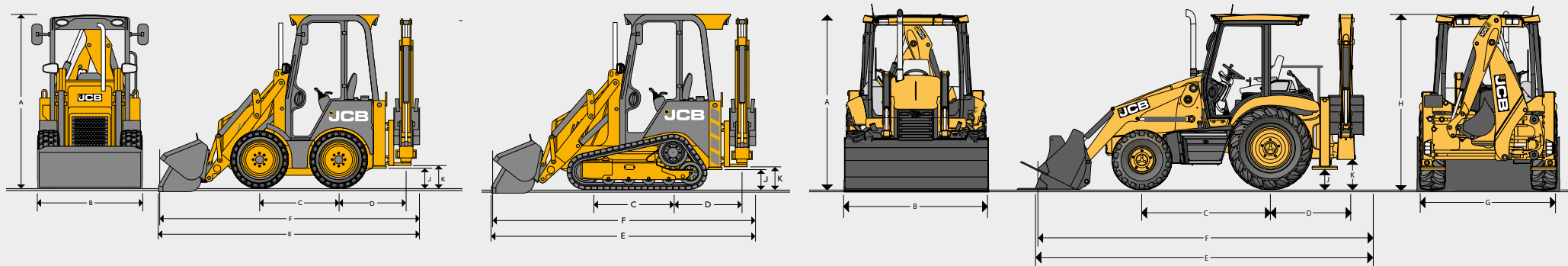
SITEMASTER OF THE ROAD.

The JCB Sitemaster excavator loader can drive direct to site without the need to wait for a lorry or trailer, saving both time and money.

SITEMASTER OF COMFORT.

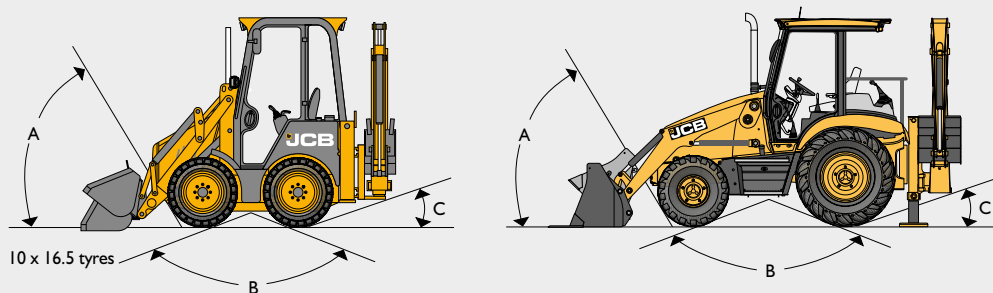
The Sitemaster cab is designed around the user, for day-long operator comfort plus ergonomic and intuitive controls.

STATIC DIMENSIONS



		ICX Wheeled (10x16.5 Tyres)	ICX Tracked (320mm)	2DX	
A	Cab roof height	m	2.25	2.38	2.64
A	Cab roof height (low canopy)	m	2.10	2.23	-
B	Overall width (over shovel)	m	1.58	1.80	1.91
C	Axle centreline distance	m	1.07	-	2.08
D	Slew centre to rear axle centre distance	m	0.87	-	1.22
E	Total travel length (short/long arm)	m	3.40 / 3.50	3.57	5.5
F	Total travel length – shovel in carry position (short/long arm)	m	3.31 / 3.41	3.47	5.53
G	Rear frame width (over stab leg feet)	m	1.56	1.80	1.8
H	Total travel clearance (fixed dipper)	m	2.17	2.20	2.65
	Total travel clearance (extending dipper)	m	2.17	2.27	-
J	Stabiliser feet clearance	m	0.26	0.26	0.33
K	Kingpost clearance	m	0.32	0.32	0.48
	Track set footprint	m ²	-	0.85	-

GROUND LINE ANGLES



		ICX Wheeled	ICX Tracked	2DX	
A	Approach angle	degrees	52	60	83
B	Interface angle/ramp to ground plane	degrees	132	-	132
C	Departure angle	degrees	23	23	18
D	Ground clearance	mm	180	260	0.28

ENGINE

		ICX / ICXT	2DX
Emissions standard		Stage EC Stage IIIA	BS-III
Manufacturer		Perkins 404D-22	KOEL 4R810
Aspiration		Natural	Natural
Displacement	litres	2.2	3.2
No. of cylinders		4	4
Rated engine	rpm	2800	2200
Power ratings			
Rated ISO 14396 (SAE J1995 Gross)	kW (hp)	36.3 (49)	36.4 (48.8)
Max. torque @ 1800rpm	Nm	143	203
Fuel type		Diesel	Diesel
Fuel filter		Replaceable cartridge plus water/sediment separator prefilter	
Air cleaner		Dual element	
Oil filter and lubrication		Full flow, spin-on type filter. Engine oil service intervals 500 hours	
Cooling system		Water, hot climate specification. Pressurised 1.0 bar, pusher fan. Pressurised tank with integral filler neck and overflow tank.	

OPERATING WEIGHTS

		ICX Wheeled		ICX Tracked
		Short Arms	Long Arms	Long Arms
Fixed dipper	kg	3158	3174	4262
Extended dipper	kg	3238	3254	4342

ELECTRICAL AND INSTRUMENTATION

Gauges	Fuel level, hour meter
Warning system	Audible and visual system. Ignition, working lights, park brake, alternator, main beam, engine oil pressure, water temp
Battery	72A/hour
Pre-wire	Beacon
Horn	Controlled from both front and rear
Alternator	50 amp standard (85A alternator on the aircon option)
Front working lights	2 adjustable
Rear working lights	2 adjustable

TRANSMISSION

	ICX / ICXT	2DX
Manufacturer	Danfoss / Rexroth	JCB
Type	Hydrostatic	Synchoshuttle
Travel speeds		
Gears forward/reverse	-	4 forward/2 reverse
Shuttle control - F/R	-	Power shuttle
Forward	-	Gear
1st	-	4.4
2nd	-	7.1
3rd	-	15.2
4th	-	28.2

*Speeds may vary dependant on tyre selection

SERVICE CAPACITIES

		ICX / ICXT	2DX
Hydraulic system including tank	ltr	45	60
Fuel tank	ltr	45	60
Chain cases	ltr	10	-
Cooling system	ltr	8	13.5
Engine oil with filter	ltr	9.6	8
Transmission		-	16
Rear axle		-	10

HYDRAULIC SYSTEM

		ICX Wheeled	ICX Wheeled HF	ICX Tracked	ICX Tracked HF
Open centre systems (gear pump) @2800 rpm services	l/min	45	45	45	45
Open centre systems (gear pump) @2800 rpm HF	l/min	-	100	-	100
System relief pressure Manual	bar	207	207	207	207
System relief pressure EasyControl	bar	220	220	220	220
Handheld tool circuit	l/min	20	20	20	20
Handheld tool circuit	bar	138	138	138	138

LOADER DIMENSIONS

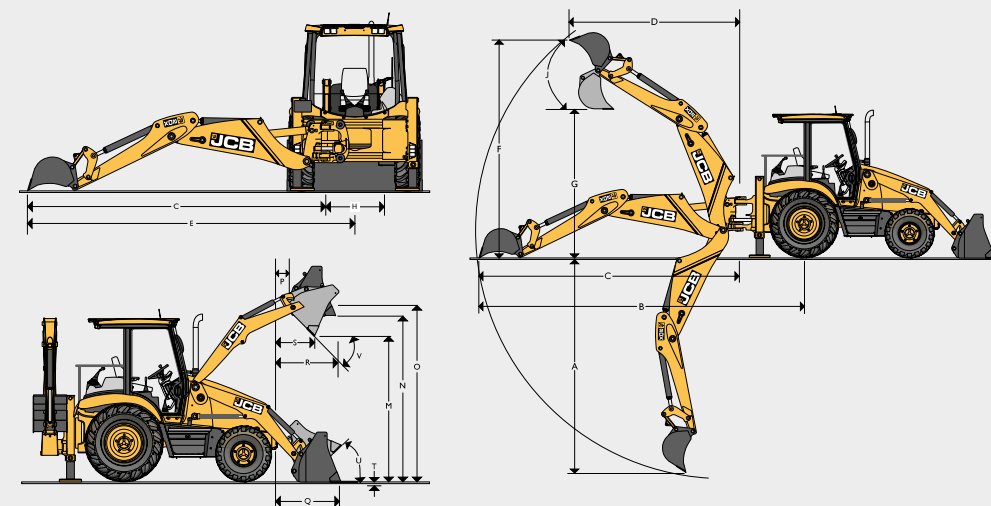
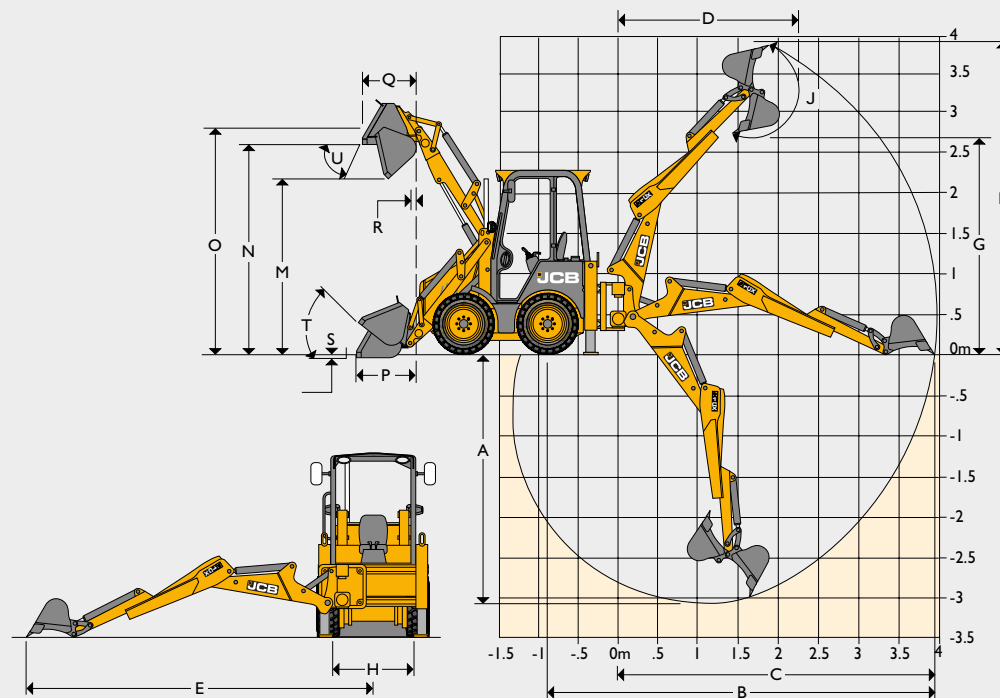
		ICX Wheeled		ICX Tracked	2DX	
		Short Arms	Long Arms	Long Arms		
M	Dump height	m	2.10	2.15	2.21	2.3
N	Load over height	m	2.51	2.59	2.65	2.83
O	Loader hinge pin height	m	2.70	2.80	2.86	3.0
P	Reach at ground (toe plate horizontal)	m	0.84	0.91	1.41	0.37
Q	Maximum reach at full height	m	0.63	0.74	0.74	1.31
R	Reach at full height fully dumped	m	0.30	0.40	0.40	1.12
S	Dig depth (toe plate horizontal) clearance	m	0.05	0.14	0.05	0.79
U	Roll back at ground	degrees	35	42	42	46
V	SAE Dump angle	degrees	43	43	43	44
	SAE Loader breakout – shovel	kgf	2350	2350	2350	3370
	SAE Maximum hydraulic lift capacity	kgf	1050	1000	1000	1620
	Shovel capacity	m ³	0.28	0.28	0.36	0.57
T	Below ground dig depth	m	-	-	-	0.09

LOADER PERFORMANCE

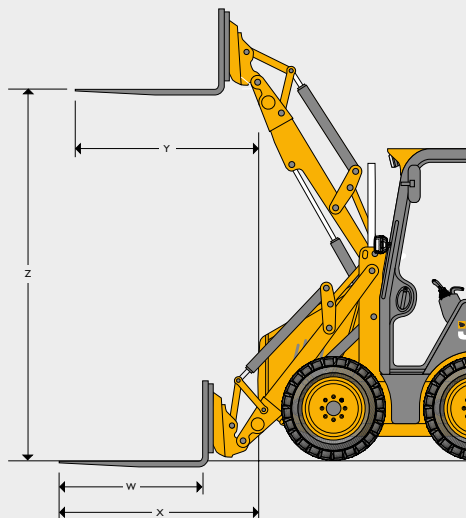
		ICX Wheeled	ICX Tracked	2DX
		6-in-1 shovel	6-in-1 shovel	
Loader breakout – shovel	kgf	2350	2350	3370
Loader breakout – arms	kgf	2400	2400	1834
Tipping load (ISO 14397:2007)	kgf	1160 - 1320	1900	5152
Payload rating as a percentage of tipping load	%	50	35	50
Rated operating capacity (ISO 14397:2007)	kgf	Range from 580 to 660	665	2576
Payload		-	-	800
*Rated operating capacity as determined according to ISO 14397: 2007	kg	Depending on specification	Track mc includes extending dipper	5220

BACKHOE DIMENSIONS

		ICX Wheeled		ICX Tracked		2DX	
		Fixed Dipper	Extended Dipper	Fixed Dipper	Extended Dipper		
A	SAE Maximum dig depth	m	2.55	3.08	2.55	3.08	3.02
	SAE Maximum dig depth 2ft flat bottom	m	2.49	3.02	2.49	3.02	-
B	Reach – ground level to rear wheel centre	m	4.24	4.78			5.14
C	Reach – ground level to slew centre	m	3.38	3.91	3.38	3.91	3.93
D	Reach – at full height to slew centre	m	1.79	2.22	1.79	2.22	1.81
E	Side reach – to centre line of machine	m	3.83	4.35	3.83	4.35	4.36
F	SAE operating height	m	3.44	3.86	3.44	3.86	3.88
G	Maximum load over height	m	2.35	2.67	2.35	2.67	2.74
H	Total kingpost travel	m	0.99	0.99	1.19	1.19	0.86
J	Bucket rotation	degrees	202	180	202	180	182
	Bucket tearout	kgf	2201	2201	2201	2201	3120
	Dipper tearout	kgf	1488	1488	1488	1488	1750



LOADER ATTACHMENTS – FORKLIFT PERFORMANCE DATA



		ICX		ICXT
		Short arms	Long Arms	Long Arms
Quickhitch mounted forks				
W Forks – tine length	m	1.05	1.05	1.05
Forks – tine width	m	0.08	0.08	0.08
X Forks reach at ground level	m	1.50	1.68	1.6
Y Forks reach at full height	m	1.34	1.40	1.40
Z Forks lift height – max.	m	2.67	2.75	2.82
Fork spacing – min.	m	0.2	0.2	0.2
Fork spacing – max.	m	1.03	1.03	1.03
Tipping Load @ 500mm load centres fixed dipper		932	880	1059
SWL @ 500mm load centres fixed dipper	kg	466	440	370
Tipping Load @ 500mm load centres extending dipper		1026	908	1135
SWL @ 500mm load centres extending dipper	kg	513	454	397
Payload rating as a percentage of tipping load ISO 14397-1	%	50	50	35

NOISE & VIBRATION LEVELS

		ICX / ICXT	2DX
Internal	dB(A)	82	88
External	dB(A)	101	108
Vibration	Hand arm vibration does not exceed 2.5m/s ² for all duties with the exception of rough road tracking which averages 3.4m/s ²		-
	Whole body vibration 0.29m/s ²		-

OPTIONAL ACCESSORIES

Machine model	ICX / ICXT	2DX
Tyres	Tyres size 10 x 16.5 NHS 6PR. Grassland tyres for minimised ground disturbance.	Front Tyre Size 7.5 x 16 - 16 PLY Rear Tyre Size 14.9 x 24 PLY
Tracks	320 x 86 x 4300	-
Controls	ISO+ pattern excavator controls, SAE+ pattern excavator controls, JCB X-pattern excavator controls (Manual control mcs only), EasyControl in Servo SAE/ISO or Switchable SAE/ISO	JCB X-pattern excavator controls.
Machine features	Fully glazed ROPS/FOPS cab, road lights, face level fan, external mirrors, fire extinguisher, air filter pre-cleaner.	Pre-cleaner, canopy frame, lockable toolbox.
Machine and site protection	Flashing beacon, reverse alarm, large stabiliser feet, stabiliser street pads, front screen guard.	Reverse alarm, large stabiliser feet, front windscreen with wiper.
Attachments	Front loader auxiliary circuit, front shovel float, auxiliary hand held tool circuit, excavator bucket quickhitch, hammer/bi-directional auxiliary circuit, pallet forks and frame.	Selection of GP buckets.

LOADER ATTACHMENTS – DIRECT MOUNT

	ICX		ICXT		2DX	
	GP shovel Capacity SAE	6-in-1 shovel Capacity SAE	GP shovel Capacity SAE	6-in-1 shovel Capacity SAE	GP shovel Capacity SAE	6-in-1 shovel Capacity SAE
Width mm	Rated m ³	Rated m ³	Rated m ³	Rated m ³	Rated m ³	Rated m ³
1580	0.32	0.31	N/A	N/A	N/A	N/A
1800	N/A	N/A	0.37	0.36	N/A	N/A
1910	N/A	N/A	N/A	N/A	0.61	0.60

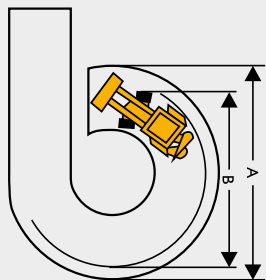
BACKHOE ATTACHMENTS – STANDARD PROFILE BUCKET

Width mm (Including sidecutters. Width less sidecutters deduct 25mm)	ICX/ICXT				2DX			
	Capacity SAE		Weight (+ Teeth)	Teeth	Capacity SAE		Weight (+ Teeth)	Teeth
	Rated m ³	Struck m ³	kg		Rated m ³	Struck m ³	kg	
230	0.03	0.02	51	2	0.03	0.02	52	2
305	0.04	0.04	52	3	0.04	0.04	55	3
460	0.06	0.05	54	3	0.06	0.05	68	3
610	0.08	0.06	57	4	0.08	0.06	87	4

DITCHING BUCKETS

Width mm	ICX/ICXT			2DX		
	Capacity SAE Rated m ³	Capacity SAE Struck m ³	Weight kg	Capacity SAE Rated m ³	Capacity SAE Struck m ³	Weight kg
1000	0.12	0.10	52	N/A	N/A	N/A
1200	N/A	N/A	N/A	0.12	0.10	116

TURNING CIRCLE



Inner wheels braked

A* Outside loader bucket	9.70m
B Outside wheels	7.44m

Inner wheels not braked

A Outside loader bucket	11.0m
B Outside wheels	7.90m

*Standard bucket in travel position.

BACKHOE ATTACHMENTS – GP BUCKETS

Width		Capacity	
inch	mm	Rated m ³	Struck m ³
9	230	-	0.028
12	305	0.040	0.033
14	350	0.048	0.039
16	405	0.057	0.045
18	450	0.065	0.051
24	600	0.091	0.070
30	750	0.117	0.089

BACKHOE ATTACHMENTS – HAMMERMASTER HM266Q

Weight	Tool diameter	Carrier weight	Impact energy	Oil flow min/max.	Operating pressure min/max.	Blow rate min/max.	Sound power level
kg	mm	t	J	lpm	bar	bpm	dbA
224	65	2.8 - 6.0	376	42 - 75	100 - 150	720 - 1400	118

OTHER

Kerb grab installation (manual)

Earth drill

Quick hitch – excavator (manual)

6-in-1 bucket

Compactor

STEERING

Front wheel full power hydrostatic system utilising the main hydraulic pump via a steering priority valve. In the event of engine failure, emergency steering is maintained.

BRAKES

Service: Hydraulically actuated, dual line, self adjusting compensated oil immersed, multi-disc type on the rear axle, well protected from dirt, water etc. requiring no maintenance. Operated through independent pedals linked together for normal use.

Two independently operable foot pedals enable machine to manoeuvre in tight spaces.

Parking: Electrically operated by switch, dust proof, self adjusting, oil immersed sealed parking discs inside the gearbox.

HYDRAULIC SYSTEM

- Main relief valve: 180bar • Pump type: 2 section displacement gear • Pump capacity: 69lpm@2200rpm
- Filtration through suction strainer and return line JCB Filtermatic filter • During excavation the circuit automatically varies hydraulic power to match digging conditions for extra performance, control and power
- Careful routing of hydraulic hoses and pipework guards against site damage and allows easy servicing.

CANOPY

- Front glass with wiper provided for operator comfort whilst driving. • Excellent operator safety.
- Floor mats and plenty of legroom minimises fatigue and provides extra comfort to the operator.
- Adjustable operator seat combined with ergonomically positioned controls and soft touch steering wheel allows an operator to work uninterrupted for long hours.
- Canopy provides easy 'walk-through' access. Other features include seat belt, large convex rear view mirror, front screen wiper, front and rear horn, hazard warning system, lockable tool box and helper seats (2+1).
- Instrumentation panel is positioned on the right hand side and includes engine speed, engine hours, fuel level, water temperature and 12v aux power socket. Easily visible when operating either end.
- Audible and visual fault warning system for alternator charging, coolant temperature, engine oil pressure, blocked air filter, transmission oil pressure and temperature and hand brake on.

AXLES

Rear: Drive axle rigidly mounted, incorporates JCB Max-Trac torque proportioning differential, driven by short propshaft from gear box.

Front: 2WD steer axle, centrally pivoted with oscillation angle of 16°.

ELECTRICS

100 ampere-hour 12 volts battery system with alternator and full road lighting.

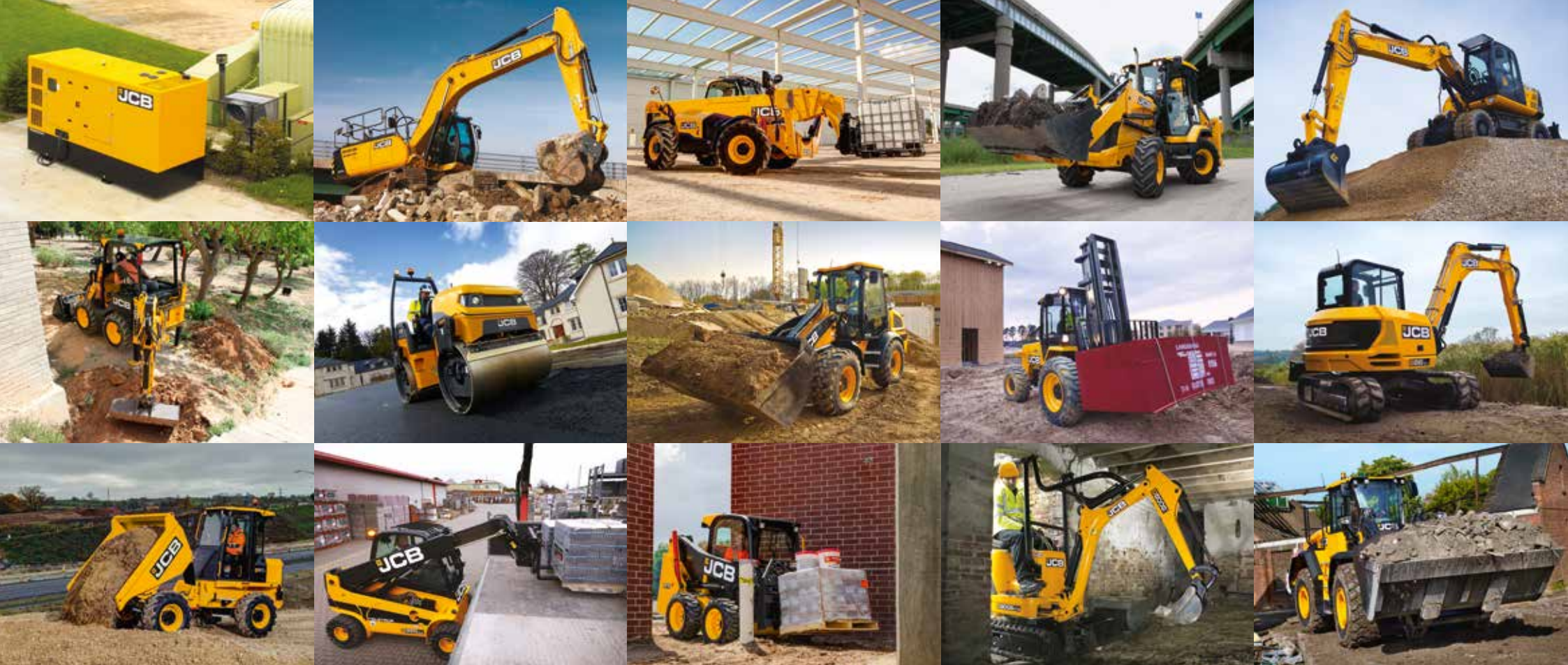
TYRES

Front: 7.5x16-16PR

Rear: 14.9x24-12PR

WEIGHT

Shipping: 4530kg



ONE COMPANY, OVER 300 MACHINES.

Your nearest JCB dealer

EXCAVATOR LOADER ICX / ICXT / 2DX

Gross power: 36kW (49hp) Maximum dig depth: 3.08m Shovel capacity: 0.32 - 0.55m³

JCB Sales Limited, Rokeceter, Staffordshire, United Kingdom ST14 5JP.

Tel: +44 (0)1889 590312 Email: salesinfo@jcb.com

Download the very latest information on this product range at: www.jcb.com

©2022 JCB Sales. All rights reserved. No part of this publication may be reproduced, stored in a retrieval system, or transmitted in any form or by any other means, electronic, mechanical, photocopying or otherwise, without prior permission from JCB Sales. All references in this publication to operating weights, sizes, capacities and other performance measurements are provided for guidance only and may vary dependant upon the exact specification of machine. They should not therefore be relied upon in relation to suitability for a particular application. Guidance and advice should always be sought from your JCB Dealer. JCB reserves the right to change specifications without notice. Illustrations and specifications shown may include optional equipment and accessories. The JCB logo is a registered trademark of J C Bamford Excavators Ltd.

