

SPECIFICATION

STAGE V



LOADALL | COMPACT AGRICULTURAL RANGE

Max power: 130hp/97kW Max lift capacity: 3000kg Max lift height: 6m



BIG POWER FOR SMALL SPACES.

JCB has a proven track record of designing and manufacturing world-leading agricultural telescopic handlers. Joining the current 525-60 is the latest new AGRI Loadall model, the 530-60. With compact designs offering greater manoeuvrability, along with unrivalled visibility, reliability, comfort, efficiency and of course superb build quality, these Loadalls are built for maximum productivity on any farm.



BIG PRODUCTIVITY

Even with a compact design, the 525-60 and 530-60 AGRI Loadalls are true 6m machines, delivering maximum productivity in small spaces around the farm.



BIG EFFICIENCY

The 525-60 and 530-60 Loadalls have engines and transmissions that are designed for highly demanding agricultural needs.



BIG QUALITY

Pump and motor transmission units create a simple, precise driveline with increased pushing power, designed to deliver when working with muck and litter in sheds.



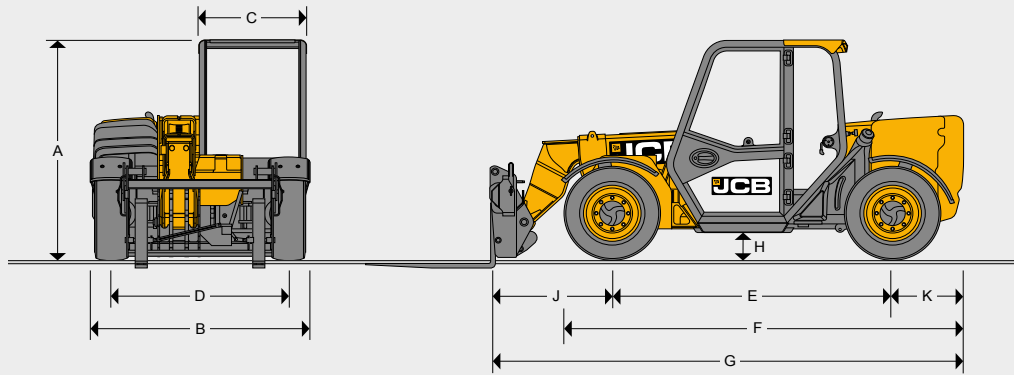
BIG COMFORT

Accommodating operator preferences, the 525-60 and 530-60 have an ergonomic and comfortable design for long hours working on the farm.

BIG SUPPORT

Our patented Adaptive Load Control System allows the operator to drive seamlessly without hindering productivity and ensuring stability.

STATIC DIMENSIONS



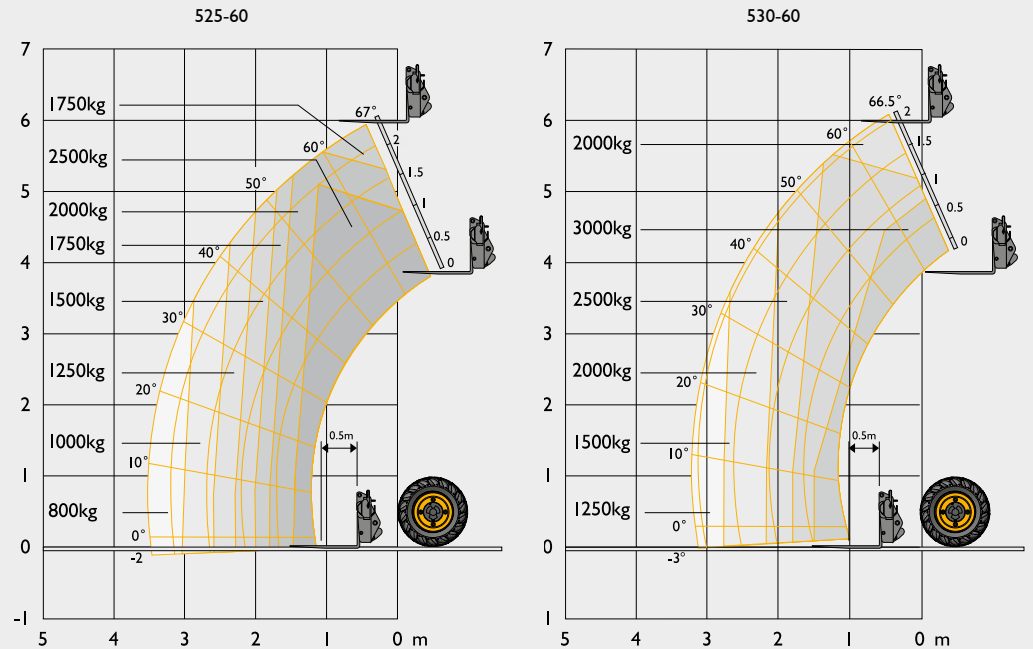
Machine model			525-60 Agri	525-60 Agri Plus	530-60 Agri Super	530-60 Agri Super	530-60 Agri Super
A	Overall height*	m	1.97	1.97	2.14	2.02	2.02
B	Overall width (over tyres)*	m	1.84	1.9	2.12	2.08	2.01
C	Inside width of cab	m	0.88	0.88	0.88	0.88	0.88
D	Front track	m	1.52	1.52	1.69	1.66	1.61
E	Wheelbase	m	2.39	2.39	2.61	2.61	2.61
F	Overall Length to front tyres	m	3.5	3.52	3.8	3.75	3.75
G	Overall length to front carriage	m	4	4	4.33	4.33	4.33
H	Ground clearance	m	0.27	0.27	0.35	0.23	0.23
J	Front wheel centre to carriage	m	1.02	1.02	1.13	1.13	1.13
K	Rear wheel centre to rear face	m	0.6	0.6	0.61	0.61	0.61
	Outside turn radius (over tyres)	m	3.4	5	3.29	3.29	3.29
	Carriage roll back angle	degrees	11	11	46	46	46
	Carriage dump angle	degrees	24	24	39	39	39
	Weight	kg	5520	5840	6360	6120	6120
	Tyres		12.5/80R18 Camso IMP	340/80R18 Michelin XMCL	400/70R24 Michelin XMCL	400/70R20 Michelin XMCL	380/75R20 Michelin XMCL

ENGINE

Machine model		525-60 Agri	525-60 Agri Plus	530-60 Agri Super
Manufacturer		JCB DIESEL BY KOHLER		JCB DIESELMAX
Displacement	ltr	2.5		4.8
No. of cylinders		4		4
Bore size	mm	88		106
Stroke	mm	102		135
Aspiration	mm	Turbocharged cooled		Turbocharged cooled
Power rating				
Power @ 2200rpm	kW (hp)	55 (74)		97 (130)
Torque rating				
Torque @ 1500rpm	Nm (lb/ft)	300 (221)		550 (405)

Latest Stage V technology and advanced design provides low fuel consumption, reduced noise, high torque and power output, total reliability and minimal maintenance. Two-stage, dry type air filter with primary and safety elements.

LIFT PERFORMANCE



Machine model		525-60 Agri	525-60 Agri Plus	530-60 Agri Super
Wheel rim size	inches	18	20	24
Maximum lift capacity	kg	2500	3000	3000
Lift capacity to full height	kg	1750	2000	2000
Lift capacity at full reach	kg	800	1250	1250
Lift height	m	6	5.97	6.09
Reach at maximum lift height	m	0.4	0.5	0.45
Maximum forward reach (to front of carriage)	m	3.3	3.27	3.22
Complies with stability test EN 1459-1 Annex B				

HYDRAULICS

Machine model		525-60 Agri	525-60 Agri Plus	530-60 Agri Super
Operating system pressure	bar	235	260	280
Flow at system pressure	ltr/min	80	90	97
Hydraulic cycle times				
		Seconds		
Boom raise		7.6	5.7	4.3
Boom lower		5.3	5.5	3.5
Boom Extend		7.5	5.5	4.8
Retract		3.7	3.3	4.0
Bucket dump		1.9	1.9	2.2
Bucket crowd		2.9	2.2	3.0

TRANSMISSION

Machine model	525-60 Agri		525-60 Agri Plus		530-60 Agri Super	
	Forward	Reverse	Forward	Reverse	Forward	Reverse
Low range kph	12	12	12	12	11	11
Hi-range kph	25	25	30	30	40	40

AXLES

Front and rear drive axles: epicyclic hub reduction drive/steer axles with torque proportioning differentials.

Limited slip differential option

ELECTRICAL SYSTEM

Machine model		525-60 Agri	525-60 Agri Plus	530-60 Agri Super
System voltage	Volt	12	12	12
Alternator output	Amp hour	100	100	170
Battery capacity	Amp hour	120	120	120

BRAKES

Service brakes: Hydraulically operated self-adjusting, oil-immersed in-board multi-disc type mounted on front axle.

530-60 Parking brake: Cable mechanical handbrake.

525-60 Parking brake: Electro SAHR handbrake.

SERVICE FILL CAPACITIES

Machine model		525-60 Agri	525-60 Agri Plus	530-60 Agri Super
Hydraulic tank	litres	49	49	51
Fuel tank	litres	75	75	66
AdBlue/DEF	litres	N/A	N/A	13.8

BOOM AND CARRIAGE

Boom is manufactured from high tensile steel. Low maintenance, hard wearing pads.

Range of carriage options are available.

NOISE AND VIBRATION

Machine model	525-60	525-60	Uncertainty	Measurement conditions
Noise at the operator station (LpA)	76 dB	79 dB	+/- 1 dB	Determined in accordance with the test method defined in EN12053
Noise emission from the machine (LWA)	103 dB	104 dB	+/- 1 dB	Guaranteed equivalent sound power (external noise) determined in accordance with the dynamic test conditions defined in 2000/14/EC
Whole body vibration (m/s ²)	0.37	0.69	0.18	ISO 2631-1:1997 normalised to an 8h reference period and based upon a test cycle defined in SAE J1166
Hand-arm vibration (m/s ²)	<2.5	<2.5	N/A	ISO 5349-2:2001 dynamic test conditions

OPTIONS

Model	525-60 Agri	525-60 Agri Plus	530-60 Agri Super	Model	525-60 Agri	525-60 Agri Plus	530-60 Agri Super
Engine and cooling				Cab			
74hp JCB Diesel by Kohler engine	●	●	N/A	ROPS/FOPS safety structure*	●	●	●
130hp JCB DieselMAX engine	N/A	N/A	●	Laminated screen	●	●	●
Widcore cooling pack	●	●	●	Mechanical suspension seat	●	●	●
Auto reversing fan	N/A	○	●	Air suspension seat (heated)	○	○	○
				Interior light	●	●	●
Transmission / Axles				Tilt and telescopic steering column	○	●	●
2-speed transmission 25kph	●	N/A	N/A	Single speed front and rear wash/wipe	●	N/A	N/A
2-speed transmission 30kph	N/A	●	N/A	2 speed front and rear wash/wipe	○	●	●
2-speed transmission 40kph	N/A	N/A	●	Roof wiper	○	●	●
2-speed transmission 20kph (TÜV)	○	○	○	Radio speaker installation	○	●	●
Forward / reverse controls on joystick	●	●	●	12V power socket	○	●	●
Column mounted transmission selector	●	●	●	7-speed heater fan	●	●	●
Limited slip differential	○	○	○	Air conditioning	○	○	○
Varispeed transmission	○	○	●	Front and roof screen blinds	○	●	●
				Single lever joystick controls	●	●	●
Hydraulics				Loader control isolator	●	●	●
Servo controls	●	●	●	External rear view mirrors	●	●	●
Flow sharing hydraulics	N/A	●	●	Fire extinguisher	○	○	○
Proportional boom and auxiliary controls	●	●	●	Screen guard	○	○	○
Adjustable constant flow hydraulics	●	●	●				
80 l/min gear pump	●	N/A	N/A	Electrical			
90 l/min variable displacement piston pump	N/A	●	N/A	Road lights front and rear	●	●	●
97 l/min gear pump	N/A	N/A	●	Reverse lights	●	●	●
Internal auxiliary venting button	●	●	●	Battery isolator	●	●	●
External auxiliary venting button	N/A	N/A	●	Rotating beacon	○	○	○
Hose burst check valves	●	●	●	Front and rear cab and boom worklights (Halogen)	○	○	●
JCB adaptive load control	●	●	●	Front and rear cab and boom worklights (LED)	○	○	○
JCB Smoothride system	○	○	●	LiveLink telematics	●	●	●
End damped boom ram	●	●	●	Unique key immobiliser	○	○	○
				Pin pad immobiliser	○	○	○
Steering				Direction indicators	●	●	●
3 steer modes	●	●	●	Hazard warning	●	●	●
Manual selectable steer modes	●	●	N/A	Reverse alarm	●	●	●
Electric selectable steer modes	○	○	●	Towing facility with trailer lighting, brakes and auxiliary	○	○	○

● Standard ○ Option N/A – Not Available
Some options are territory dependent.

*Conforms to ROPS ISO 3471 and FOPS ISO 3449.









ONE COMPANY, OVER 300 MACHINES.

Your nearest JCB dealer

LOADALL COMPACT AGRICULTURAL RANGE

Max power: 130hp/97kW Max lift capacity: 3000kg Max lift height: 6m

JCB Sales Limited, Rokeceter, Staffordshire, United Kingdom ST14 5JP.

Tel: +44 (0)1889 590312 Email: salesinfo@jcb.com

Download the very latest information on this product range at: www.jcb.com

©2023 JCB Sales. All rights reserved. No part of this publication may be reproduced, stored in a retrieval system, or transmitted in any form or by any other means, electronic, mechanical, photocopying or otherwise, without prior permission from JCB Sales. All references in this publication to operating weights, sizes, capacities and other performance measurements are provided for guidance only and may vary dependant upon the exact specification of machine. They should not therefore be relied upon in relation to suitability for a particular application. Guidance and advice should always be sought from your JCB Dealer. JCB reserves the right to change specifications without notice. Illustrations and specifications shown may include optional equipment and accessories. The JCB logo is a registered trademark of J C Bamford Excavators Ltd.

