



# THE NXT LEVEL

## JCB NXT 210<sub>LC</sub>

### TUNNEL MASTER

NXT level of fuel saving  
With  
**INTELLI CONTROL**

**10**  
WORKING  
MODES



Loaded with  
Power & Power+  
Modes for higher  
productivity



Long Maintenance  
Intervals for Engine  
& Hydraulics

**NEW**  
**LIVE JCB LINK**  
**4.0**

Advanced Telematics:  
LiveLink 4.0 for  
Enhanced Uptime.  
Stay Connected 24x7



\*T&C Apply.

Engine Power : 104 kW (140 hp) | Bucket Capacity : 0.9 cu.m GP / 0.9 cu.m(HD)  
Operating Weight : 21,250 kg (LC)

## SPECIFICATION: JCB NXT 210LC TUNNEL MASTER

### ENGINE

Model	Cummins 6BT 5.9C
Type	Water cooled, 4 stroke, 6 cylinder in line, direct injection, turbocharged diesel
Rated power	140 HP @ 2000 rpm
Piston displacement	5.88 L
Starting system	24 V

### HYDRAULIC SYSTEM

3 Work modes: eco, Power & Power+

#### Pumps

Main pumps	2 variable displacement axial piston type.
Maximum flow	2 x 220 L/min
Servo pump	Gear type
Maximum flow	20 L/min

#### Control valve

Relief valve settings	
Boom/Arm/Bucket	343 bar
Swing circuit	289 bar
Travel circuit	343 bar
Pilot control	40 bar
Main control valve	9 Spool

### SWING SYSTEM

Swing motor	Axial piston type.
Swing brake	Hydraulic braking, electrically operated spring applied disc type parking brake.
Final drive	Planetary reduction.
Swing torque	65.2 kNm
Swing gear	Large diameter, internally toothed fully sealed grease bath lubricated.
Swing speed	13.0 RPM

### TRACK DRIVE

Gradeability	70% (35deg.) continuous
Travel speed	3.8 kmph
Tractive effort	170 kN

### UNDERCARRIAGE

Track Shoe	500mm (standard)
Upper & lower rollers	Heat-treated, sealed and lubricated.
Track adjustment	Sealed and lubricated, with spring enhanced recoil.
No. of track guides	2 per side
No. of lower rollers	8 Per side
No. of upper rollers	2 per side
No. of track shoes	49 per side

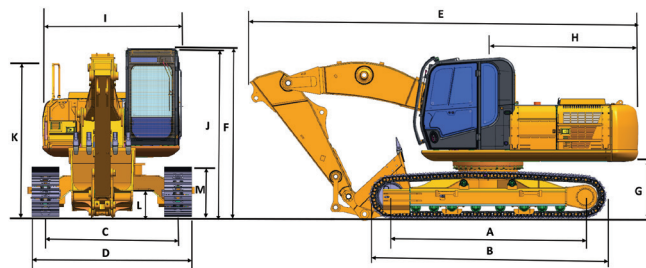
### SERVICE CAPACITIES

Fuel tank	L	343
Engine coolant	L	25.5
Engine oil	L	19
Hydraulic system	L	260
Hydraulic tank	L	120
Swing device	L	5
Travel device	L	2 x 5

### WEIGHT AND GROUND BEARING PRESSURE

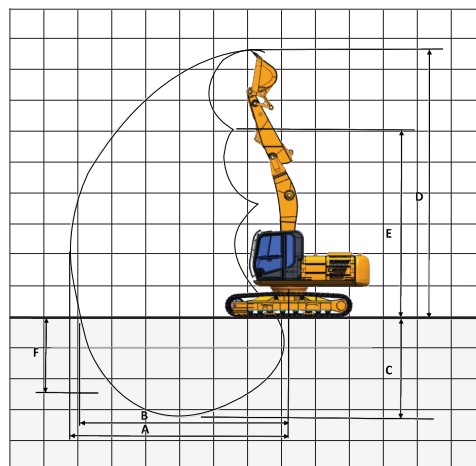
Standard machine with bucket, operator, full capacity lubes and fuel

Max operating weight	<b>JCB NXT 210LC Tunnel Master</b>	
	21,250 kg	
Ground bearing pressure	0.58 kg / sq cm	



### STATIC DIMENSIONS

		<b>JCB NXT 210LC Tunnel Master (LC track, 500 mm track shoe)</b>
		<b>2.4 m arm</b>
A	Track length on ground	m 3.66
B	Undercarriage overall length	m 4.46
C	Track gauge	m 2.39
D	Width over tracks	m 2.89
E	Transport length with mono boom and arm	m 7.39
F	Transport height with mono boom and dipper	m 2.98
G	Counterweight clearance	m 1.08
H	Tailswing radius	m 2.83
I	Width of superstructure	m 2.55
J	Height over cab	m 3.06
L	Ground clearance	mm 435
M	Track height	mm 885



### WORKING RANGE

		<b>Unit</b>	<b>2.4m arm</b>
A	Maximum digging reach	m	7.69
B	Maximum digging reach (on ground)	m	7.36
C	Maximum digging depth	m	3.42
D	Maximum digging height	m	9.26
E	Maximum dumping height	m	6.51
F	Maximum vertical wall cut depth	m	2.86
	Minimum swing radius	m	1.81
	Bucket tearout (ISO)	kgf	13460

\*Results shown are based on internal trials done in standard test conditions, they may vary on basis of operator efficiency and type of application. T&C Apply.

## EXCEEDING EXPECTATIONS EVERYWHERE

**60+**  
Dealers

**750+**  
Outlets

**5**  
Parts warehouses

**6000+**  
Trained service engineers

**3500+**  
Mobile service engineers

**20+**  
Operator training centres

**300+**  
Service vans

**24x7 Support**  
12 Languages

Call us for a demo: 1800-1037-386

Follow us: [f](#) [t](#) [y](#) [i](#) [i](#) /JCBIndiaLtd

**JCB** Always looking for a better way